

MILWAUKEE BALLET

MICHAEL PINK, ARTISTIC DIRECTOR

2011-12 SEASON



Take a
look behind
the curtain



“I believe Michael Pink to be the best Artistic Director that Milwaukee Ballet has had during my nearly three decades in Milwaukee, and probably ever.”

Tom Strini, *ThirdCoast Digest*



Clockwise: Dancers Courtney Kramer, Joshua Reynolds and Julianne Kepley, and the Milwaukee Ballet Orchestra. Artistic Director Michael Pink. Photos | Jessica Kaminski.

A Message from Artistic Director **Michael Pink**

As we embark on another exciting season, I want to thank our audiences—especially our subscribers—for supporting Milwaukee Ballet. We strive to bring you the best performances, and your continued commitment is a true testament to how vibrant the arts are in our community.

From a mythical lair to Neverland, with a holiday fantasy in between, Milwaukee Ballet's 2011–12 season is a thrilling adventure of premieres and encores that won't soon be forgotten. You'll see story ballets at their best, including the provocative and dramatic **Dracula**, Milwaukee's favorite holiday tradition **The Nutcracker**, and the extremely popular **Peter Pan**. Amongst the classics, you'll experience cutting-edge dance in our two mixed repertory performances that spotlight distinguished and emerging choreographers, while underscoring our dancers' beauty and athleticism. No matter the show, one constant always remains—exquisite dance!

Milwaukee Ballet offers flexible subscription options allowing you to see this world-class entertainment for a great price. Take a fresh look at the Ballet's menu of seating options and customize a subscription plan that values your time and interests, whether you're looking for a fun evening out with friends, a date night, or a way to spend more time with your family.

In addition, I invite you to engage with Milwaukee Ballet on a deeper level this year: register for a class with Milwaukee Ballet School, one of the largest accredited professional ballet schools in the nation; revel with fans at the annual Nutcracker Tea and The Ball; get involved with Balletomane, the Ballet's friends group; and follow our online communities at milwaukeeballet.org, Facebook, Twitter and YouTube.

Milwaukee Ballet's vision has never been stronger.

As we rise as a true leader in our community and the national dance world, it's an exciting time to be a part of the Ballet.

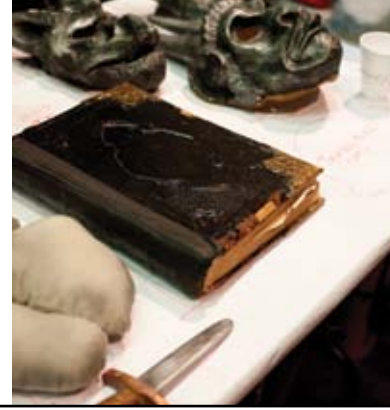
Sincerely,

Michael Pink, Artistic Director

BEHIND THE CURTAIN

Michael Pink is the longest tenured Artistic Director in Milwaukee Ballet's history, illustrating commitment to the art form and to Milwaukee's cultural success.





“Michael Pink has created a vivid visual feast driven by the passionate pulse of graceful human movement.”

Russ Bickerstaff, *OnMilwaukee.com*



DRACULA

OCTOBER 27–30, 2011

MARCUS CENTER

Michael Pink's most popular work is also the most successful ballet in recent history. Seen by nearly one million people, *Dracula* toured throughout Great Britain, New Zealand and the United States. The Company's strength and vitality is highlighted in this monstrous production combining massive, dark and towering scenery; period costumes from Tony Award winner Lez Brotherston; Paul Pyant's dramatic lighting effects; and Philip Feeney's chilling score performed live by the Milwaukee Ballet Orchestra. A breathtaking story of passion, seduction, transformation and sacrifice, *Dracula* stakes its claim as this Halloween's most thrilling adventure.

This performance is best enjoyed by patrons age 10 and older.

Top: Milwaukee Ballet Orchestra and dancer Marc Petrocci. Bottom: Dancer David Hovhannisyian. Photos Jessica Kaminski.

SPONSORED BY



ASSURANT
Health

BEHIND THE CURTAIN

Dracula has become the most magnificent outcome of Michael Pink's ten-year artistic collaboration with former Northern Ballet Theatre Artistic Director Christopher Gable.

“There are things in this world that simply must be lavish. Tchaikovsky’s ballet *The Nutcracker* is on that list.”

Elaine Schmidt, *Milwaukee Journal Sentinel*



The Joan, Jack and Victor Stein Foundation Presents

THE NUTCRACKER

DECEMBER 10–26, 2011
MARCUS CENTER

As Milwaukee’s holiday entertainment jewel, Michael Pink’s production of *The Nutcracker* is a dazzling journey to a magical land where dolls, toys and snowflakes come to life under the direction of Tchaikovsky’s unforgettable score, performed live by the Milwaukee Ballet Orchestra and Milwaukee Children’s Choir. Dancers from Milwaukee Ballet II and Milwaukee Ballet School add to the story’s youthful exuberance. *The Nutcracker* is the city’s biggest holiday spectacle, creating lasting memories year after year.

Top: Dancers Michael Linsmeier, Courtney Kramer and Valerie Harmon.
Middle: Dancers Rachel Malehorn and Julianne Kepley as the Snow Queen.
Photos Jessica Kaminski.

SPONSORED BY



BEHIND THE CURTAIN

The production requires more than 150 children from Milwaukee Ballet School and the Milwaukee Children’s Choir, 152 costumes and 100 pounds of snow. Approximately 300 yards of tulle are used to create the tutus worn by the Snow Queen, Sugar Plum Fairy, Flowers and Snowflakes.





“On Friday night, the Ballet presented THE BEST DANCING I have seen in my 20+ years as a season subscriber.”

Corinthia Van Orsdol, *subscriber*



WINTER SERIES

FEBRUARY 16–19, 2012
THE PABST THEATER

Three cutting-edge choreographers challenge the dancers' bodies with three world premieres at the intimate Pabst Theater. The Company welcomes choreographer Brock Clawson, praised for his “acrobatic and daring” choreography. Milwaukee Ballet’s Petr Zahradníček presents a playful new work to add to his growing repertoire, and Mauro de Candia, the winner of *Genesis*, Milwaukee Ballet’s 2011 international choreographic competition, returns to share his evolution over the past year.

Top: Dancers Justin Genna, Sam Neale and Valerie Harmon. Bottom: Dancer Patrick Howell. Photos Jessica Kaminski.

SPONSORED BY



BEHIND THE CURTAIN

Milwaukee Ballet’s annual performance at The Pabst Theater is the greatest opportunity for audiences to truly see the dancers up close and personal. Every muscle, facial expression and bead of sweat is easily visible from anywhere in the theater.



“Lila York’s *Celts* is an astonishing array of dance images of Ireland, a piece that is both profound and thrilling.”

Christine Temin, *Boston Globe*

SPRING SERIES

MARCH 29–APRIL 1, 2012
MARCUS CENTER

Ballet ascends to unexpected levels in these three universal meditations of dance. Lila York’s popular *Celts* is a personal history of Ireland, blending Irish folk dancing with contemporary and award winning traditional Celtic music from The Chieftains. In a complementary contrast, *The Last Glass* from Matthew Neenan features selections from Beirut, an indie-rock band reinventing the sounds of Balkan and Eastern Europe. In another twist, piano solos from Phillip Glass and Dustin O’Halloran augment Alejandro Cerrudo’s choreography in *Extremely Close*.

Top: Dancers Julianne Kepley, Joshua Reynolds and Sam Neale.
Bottom: Dancers Joshua Reynolds and Julianne Kepley.
Photos Jessica Kaminski.



BEHIND THE CURTAIN

In addition to traditional story performances, Milwaukee Ballet’s repertoire includes a focus on the industry’s most current innovators of dance, blurring the lines between classical and contemporary choreography.

“Milwaukee Ballet’s *Peter Pan* by Michael Pink could be the most spectacular show ever originated in Milwaukee.”

John Schneider, *Shepherd Express*



Presented by Ann and Joseph Heil Foundation
and Sue and Allan “Bud” Selig

PETER PAN

MAY 10–13, 2012
MARCUS CENTER

BACK BY
OVERWHELMING
DEMAND

Michael Pink’s most recently acclaimed work took five years to create through the collaboration of a renowned production team, resulting in an adventure beyond our wildest dreams. In addition to Pink’s brilliant choreography on stage and in the air, this production includes Judanna Lynn’s illuminating costumes, David Grill’s magical lighting tricks, Philip Feeney’s lively score, and enchanting scenic design by Rick Graham from the University of Wisconsin-Milwaukee. Join us once again as Peter, Tinkerbell and the Darling children soar to Neverland for escapades with the Lost Boys, Tiger Lily and the infamous Captain Hook.

Top: Dancers Marc Petrocci, Nicole Teague, Petr Zahradníček, Valerie Harmon and David Hovhannisyán. Middle: Dancer Luz San Miguel. Bottom: Dancers Marc Petrocci and Nicole Teague. Performance photos Michael S. Levine.



BEHIND THE CURTAIN

Two fellow dancers are necessary backstage to make just one dancer fly—one to adjust height, and another to maintain horizontal movement.

MILWAUKEE BALLET SCHOOL

Milwaukee Ballet School is recognized as one of the best ballet schools in the nation and the only professional dance school in the Midwest accredited by the National Association of Schools of Dance. Classes start at age three and include offerings for adults—new and experienced dancers alike. Students from Milwaukee Ballet School will be cast in *The Nutcracker* and *Peter Pan*.

MILWAUKEE BALLET II

The Nancy Einhorn Milwaukee Ballet II program is the vital force that drives Milwaukee Ballet's education and outreach programs. Milwaukee Ballet II also provides its students with the training needed to bridge the gap between student and professional through performance and touring opportunities. Milwaukee Ballet II will perform with the Company in *Dracula*, *The Nutcracker*, *Celts* and *Peter Pan*.



School and Milwaukee Ballet II photos: Jenn Mazza. Musician photo: Jessica Kaminski.



LIVE MUSIC AND THE MILWAUKEE BALLET ORCHESTRA

Milwaukee Ballet is one of only a few companies in the nation that provides the full ballet-going experience of live music at many of its performances thanks to 50 talented musicians in the Milwaukee Ballet Orchestra. Under the guidance of Music Director Andrews Sill, the Orchestra will perform in *Dracula*, *The Nutcracker* and *Peter Pan*. The Ballet is also proud to present the Milwaukee Children's Choir in *The Nutcracker* and *Peter Pan*.



Andrews Sill,
Music Director



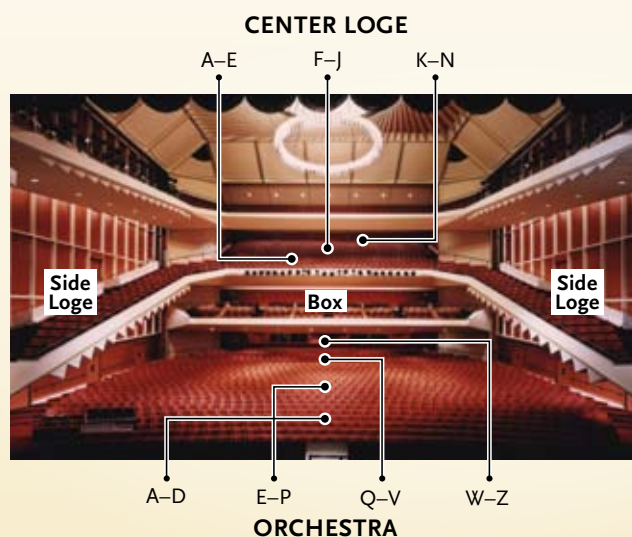
SUBSCRIBE AND GET IT ALL

Unbelievable Value. Exceptional Benefits.

Lasting Connections.

VALUE See all four season shows for as little as \$81—that's less than \$21 per show. Subscribers also save up to 25% on additional ticket orders for friends and family (excludes *The Nutcracker*).

PRIME SEATING Subscribers receive their pick of the best seats in the house and keep them for every show. We'll also provide you with an advance invitation to special events like the Nutcracker Tea (December 2011) and The Ball (February 2012).



MARCUS CENTER SEATING DIAGRAM
All subscribers keep their same seats for every show at the Marcus Center, and comparable seats at The Pabst Theater.

NEW! NO HANDLING FEES For your convenience facility fees are included in the ticket price, and the Ballet has removed its former handling fee. Purchase tickets directly through Milwaukee Ballet's box office to avoid additional costs. Sales tax is computed at 5.6%.

NEW! NO EXCHANGE FEES Need to switch your tickets to another performance date of the same ballet? No problem! We'll waive the exchange fee for subscribers.

LOST TICKETS Only season patrons receive free ticket replacement. You can also donate your tickets back to the Ballet as a tax-deductible contribution.

INSIDER ACCESS Subscribers are kept up-to-date with all of the news on (and off!) the stage with the Balletomane newsletter, e-news, Facebook, Twitter, YouTube and at milwaukeeballet.org. Plus, only subscribers are regularly invited to the studio to watch the dancers rehearse.

NEW! GROUP PACKAGES—THE MORE THE MERRIER! Groups of 10–24 receive a 15% discount, and groups of 25 or more receive a 20% discount on tickets. All groups receive prime seating and flexible payment options. The Ballet can assist in making arrangements for special needs, private receptions and catering to tailor the perfect event for guests.

General Information

FACILITY FEE Ticket prices include a fee charged by the performance venues for maintenance and preservation.

SPECIAL NEEDS Assistance is available for patrons in wheelchairs, as well as the visually and hearing impaired.

PARKING Arrive early as parking fills quickly and spaces are unable to be held specifically for Milwaukee Ballet patrons.

- Marcus Center parking structure (Water and State)
- Milwaukee Center underground parking (Water and Kilbourn)

CONTACT US Please direct questions regarding pricing, seating charts, your order, or information about a show to our courteous box office staff:

milwaukeeballet.org | 414-902-2103 | **Groups:** 414-902-2102
504 W. National Avenue, Mon-Fri 9am–4:30pm

Order Tickets One Of These Ways

1. Online* at milwaukeeballet.org
2. Call 414-902-2103
3. Fax 414-649-4066
4. Mail to: Milwaukee Ballet | 504 W. National Avenue | Milwaukee, WI 53204

Please consider adding a contribution to your subscription package to further support our work on stage, in our ballet school and through our community outreach programs.

*Full Season subscriptions only



**ONLY SUBSCRIBERS
CAN REGISTER IN ADVANCE!**

NUTCRACKER TEA

Milwaukee Ballet invites you to experience the event families have enjoyed year after year.

DECEMBER 2011

Enjoy excerpts from *The Nutcracker* performed by Milwaukee Ballet II, a ballet lesson, Be-a-Ballerina makeover, tea sandwiches and sweets, crafts and much more!
The Nutcracker Tea is most enjoyed by children ages 3–10.

SEASON PACKAGES

Choose from one of our tailored packages to build a season that accommodates you.

FULL SEASON Full Season subscribers receive tickets for *Dracula*, *Winter Series*, *Spring Series* and *Peter Pan* at 25% off, and a 10% discount on the best seats for *The Nutcracker*.

BOX	\$ 273	ORCHESTRA W-Z / CENTER LOGE F-J	\$ 123
ORCHESTRA E-P / SIDE LOGE	\$ 213	CENTER LOGE K-N	\$ 81
ORCHESTRA A-D, Q-V / CENTER LOGE A-E	\$ 183		

MINI-SERIES With the Mini-Series subscription, you can choose THREE shows at 10% off (excluding *The Nutcracker*). Select from *Dracula*, *Winter Series*, *Spring Series*, or *Peter Pan*.

BOX	\$ 246	ORCHESTRA W-Z / CENTER LOGE F-J	\$ 111
ORCHESTRA E-P / SIDE LOGE	\$ 192	CENTER LOGE K-N	\$ 73.50
ORCHESTRA A-D, Q-V / CENTER LOGE A-E	\$ 165		

FRIENDS & FAMILY PACKAGE This popular package provides magical entertainment at a valuable savings for family, friends or a combination of both. Subscribers see three enchanting shows: *The Nutcracker*, *Peter Pan* and one additional show. Select from *Dracula*, *Winter Series* or *Spring Series*.

BOX	\$ 228	ORCHESTRA A-D	\$ 147
ORCHESTRA E-P / SIDE LOGE	\$ 174	ORCHESTRA W-Z / CENTER LOGE F-J	\$ 120
ORCHESTRA Q-V / CENTER LOGE A-E	\$ 156	CENTER LOGE K-N	\$ 73.50

MILWAUKEE BALLET SCHOOL FULL SEASON Fully registered students of Milwaukee Ballet School and their families can enjoy up to four Full Season subscriptions (*Dracula*, *Winter Series*, *Spring Series* and *Peter Pan*) at 50% off single ticket prices.

School families also receive 20% off single ticket purchases to all performances.

BOX	\$ 182	ORCHESTRA W-Z / CENTER LOGE F-J	\$ 82
ORCHESTRA E-P / SIDE LOGE	\$ 142	CENTER LOGE K-N	\$ 54
ORCHESTRA A-D, Q-V / CENTER LOGE A-E	\$ 122		

FLEX-PASS Just like the name says—create a season pass flexible enough to fit your lifestyle and interests! Receive four ticket vouchers that can be used for any show, any performance, and in any combination. Invite friends and go to one show or give two vouchers as gifts—the options are limitless! **Choose your shows and seats after August 22, 2011. Redeemable at Milwaukee Ballet's box office only.**

PREMIUM (EXCLUDES BOX SEATS)	\$ 228	STANDARD (ORCHESTRA W-Z/CENTER LOGE F-N)	\$ 128
------------------------------	--------	--	--------

THE NUTCRACKER ADVANCE ORDER Order your tickets today for the best seats possible to this holiday spectacle! **Full Season subscribers receive 10% off. School families receive 20% off.**

PACKAGE	FULL	MINI/FAMILY*/FLEX	SCHOOL	THE NUTCRACKER DEC 2011 SCHEDULE Please circle one.							
				SUN	MON	TUE	WED	THU	FRI	SAT	
BOX	\$64	\$71	\$57								10 1:30 PM 7:30 PM
ORCHESTRA E-Z CENTER LOGE A-J SIDE LOGE	\$46	\$51	\$41	11 1:30 PM						16 7:30 PM	17 1:30 PM 7:30 PM
ORCHESTRA A-D CENTER LOGE K-N	\$37 \$24	\$41 \$27	\$33 \$22	18 1:30 PM 7:30 PM			21 7:30 PM	22 7:30 PM	23 1:30 PM 7:30 PM	24 1:30 PM	
					26 1:30 PM 7:30 PM						

*Note: The Family Package already includes The Nutcracker—order additional tickets for friends and family!

ORDER FORM

I want to be a part of the 2011–12 season!

PICK YOUR DAY AND TIME FOR FULL, MINI, FRIENDS & FAMILY AND SCHOOL PACKAGES

THURSDAY 7:30 PM FRIDAY 7:30 PM SATURDAY 7:30 PM SUNDAY 1:30 PM

FULL SEASON	SEATING SECTION _____	PRICE \$ _____	# OF PACKAGES X _____	SUBTOTAL = \$ _____
--------------------	-----------------------	----------------	-----------------------	---------------------

MINI-SERIES (Pick three) <input type="radio"/> <i>Dracula</i> <input type="radio"/> <i>Winter Series</i> <input type="radio"/> <i>Spring Series</i> <input type="radio"/> <i>Peter Pan</i>	SEATING SECTION _____	PRICE \$ _____	# OF PACKAGES X _____	SUBTOTAL = \$ _____
---	-----------------------	----------------	-----------------------	---------------------

FRIENDS & FAMILY PACKAGE Includes <i>The Nutcracker</i> , <i>Peter Pan</i> and one additional show (Pick one) <input type="radio"/> <i>Dracula</i> <input type="radio"/> <i>Winter Series</i> <input type="radio"/> <i>Spring Series</i>	SEATING SECTION _____	PRICE \$ _____	# OF PACKAGES X _____	SUBTOTAL = \$ _____
SPECIFY DATE/TIME FOR THE NUTCRACKER _____				

SCHOOL FULL SEASON	SEATING SECTION _____	PRICE \$ _____	# OF PACKAGES X _____	SUBTOTAL = \$ _____
---------------------------	-----------------------	----------------	-----------------------	---------------------

FLEX-PASS: PREMIUM	SEATING SECTION _____	PRICE \$ 228.00	# OF PACKAGES X _____	SUBTOTAL = \$ _____
---------------------------	-----------------------	-----------------	-----------------------	---------------------

FLEX-PASS: STANDARD	SEATING SECTION _____	PRICE \$ 128.00	# OF PACKAGES X _____	SUBTOTAL = \$ _____
----------------------------	-----------------------	-----------------	-----------------------	---------------------

ADD THE NUTCRACKER	SEATING SECTION _____	PRICE \$ _____	# OF TICKETS X _____	SUBTOTAL = \$ _____
---------------------------	-----------------------	----------------	----------------------	---------------------

SPECIFY DATE/TIME _____

	TICKET ORDER SUBTOTAL	\$ _____
	STATE SALES TAX (compute 5.6%)	\$ _____
	DONATION*	\$ _____
	TOTAL	\$ _____

*Please consider adding a contribution to your subscription package to further support our work on stage, in our ballet school and through our community outreach programs.

NAME _____

ADDRESS _____

CITY _____ STATE _____ ZIP _____

DAY PHONE _____ EVE PHONE _____

E-MAIL* _____

REFERRED BY _____ HOW LONG HAVE YOU SUBSCRIBED? _____

* We will not share your e-mail address with anyone and will only use it to notify you of special offers, events and other exciting happenings.

PAYMENT INFORMATION

VISA MASTERCARD AMERICAN EXPRESS DISCOVER CHECK made payable to Milwaukee Ballet

A \$5 fee will be charged for each additional credit card used on an order.

NAME ON CARD _____

ACCOUNT # _____ EXP. _____

BILLING ADDRESS (IF DIFFERENT FROM ABOVE) _____

PLEASE SEND ME INFORMATION ABOUT

Milwaukee Ballet School The Nutcracker Tea Balletomane, The Ballet's Friends Group
 Community Outreach Programs Group Opportunities

SEND BY
 e-mail
 U.S. mail

FOUR WAYS TO ORDER

1. Online* at milwaukeeballet.org **2. Call** 414-902-2103 **3. Fax** 414-649-4066

4. Mail to: Milwaukee Ballet, 504 W. National Avenue, Milwaukee, WI 53204 (* Full subscriptions only)



MILWAUKEE BALLET

MICHAEL PINK, ARTISTIC DIRECTOR

504 W. National Avenue
Milwaukee, WI 53204 USA

2011-12 SEASON

DRACULA

OCTOBER 27-30, 2011

THE NUTCRACKER

DECEMBER 10-26, 2011

WINTER SERIES

FEBRUARY 16-19, 2012

SPRING SERIES

MARCH 29-APRIL 1, 2012

PETER PAN

MAY 10-13, 2012

PRESENTERS/SPONSORS



UNITED PERFORMING ARTS FUND
Life's better with the arts



WISCONSIN arts BOARD
Creativity, Culture, Community, Commerce.

CAMPAC
MILWAUKEE COUNTY
ARTS FUND

FRONTIER
AIRLINES

►Subscribe by April 1 to receive one **FREE** ticket voucher per subscription.
milwaukeeballet.org | 414-902-2103

Counterclockwise: Artistic Director Michael Pink, Rachel Malehorn, Darren McIntyre, Nicole Teague, Julianne Kepley and Valerie Harmon. Photos Jessica Kaminski.
Front cover: Marc Petrocci. Photo: Michael S. Levine.